

# NORTH MANLY - P582

1 BED, 1.5 BATH, 2 GARAGE

GrannyFlat  
solutions

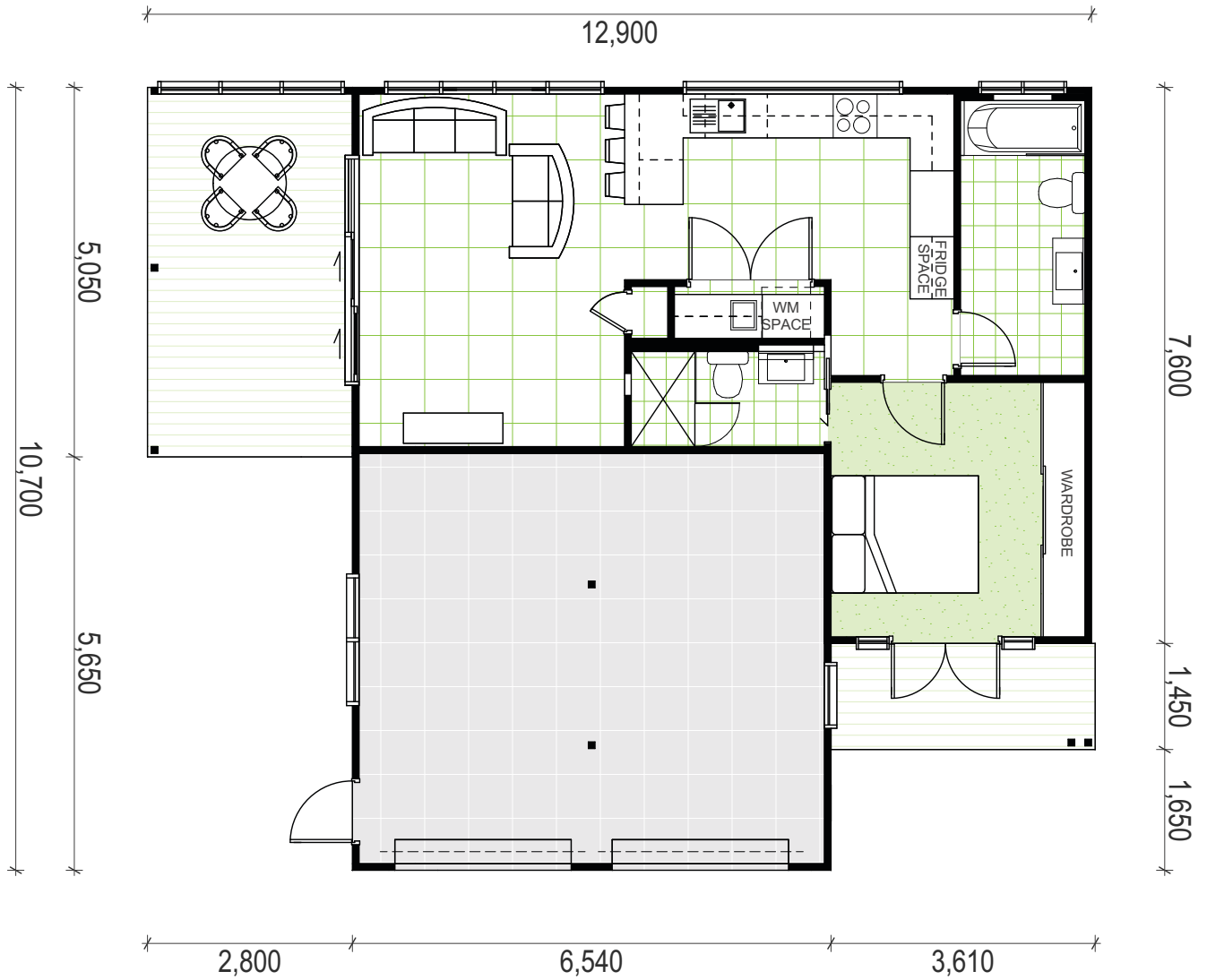


- 60m<sup>2</sup> custom designed Granny Flat
- 32m<sup>2</sup> double garage
- 5m<sup>2</sup> tiled porch & 14m<sup>2</sup> tiled alfresco
- Timber cladding & Colorbond gable roof
- Glass french doors with colonial bars
- Louvre windows
- Hardwood timber flooring in living & kitchen, carpet in bedroom
- 2.7m high ceilings
- Ducted air conditioner & ceiling fans
- Photovoltaic solar panels on roof

- 20mm stone benchtop with breakfast bar & pendant lights
- Routed oberon polyurethane doors & pantry
- Ceramic cooktop & dishwasher
- Concealed ducted rangehood
- Large splashback window
- Separate laundry with open shelving & polyurethane cupboards
- Recessed shaving cabinet
- Wall-hung vanity with LED strip lights
- Bath/ shower combo with niche

# NORTH MANLY - P582

1 BED, 1.5 BATH, 2 GARAGE



See more of this project and others on our website!



(02) 9481 7443  
@ info@GrannyFlatSolutions.com.au  
www.GrannyFlatSolutions.com.au

The Only Multi-Award Winning Builders— Build with the Best